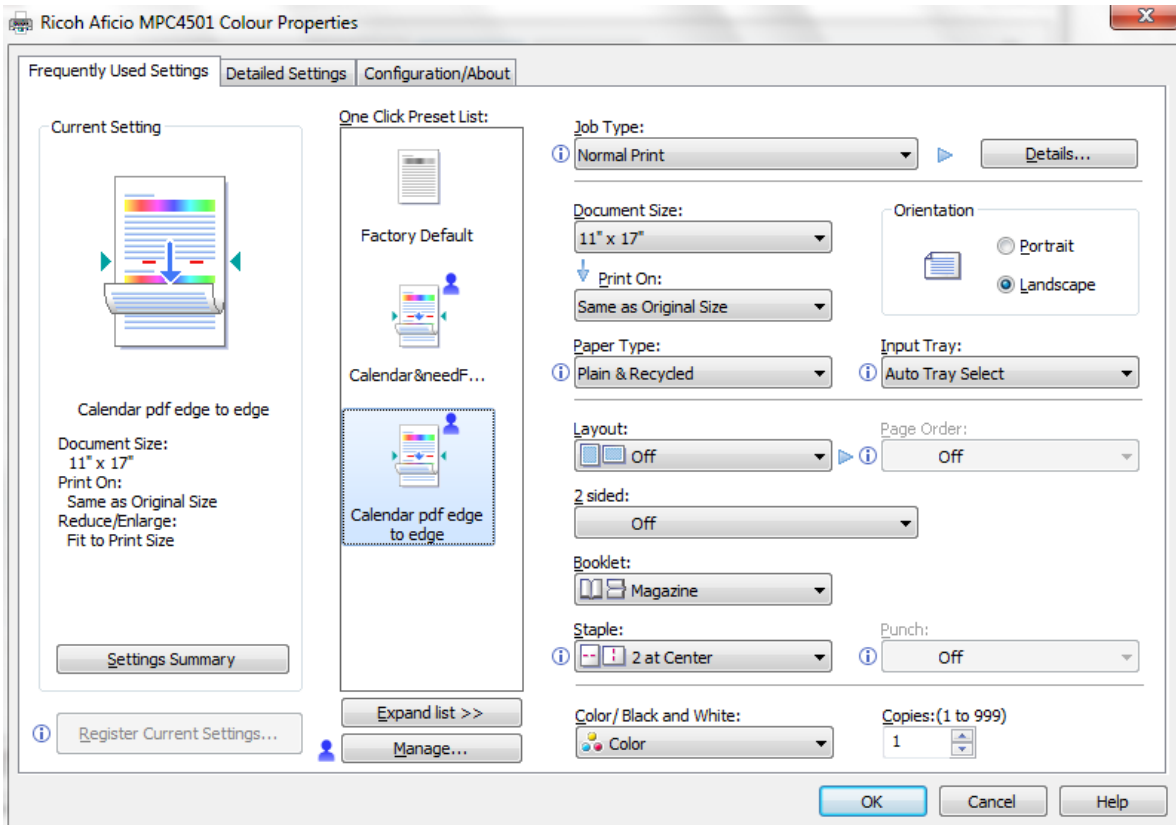
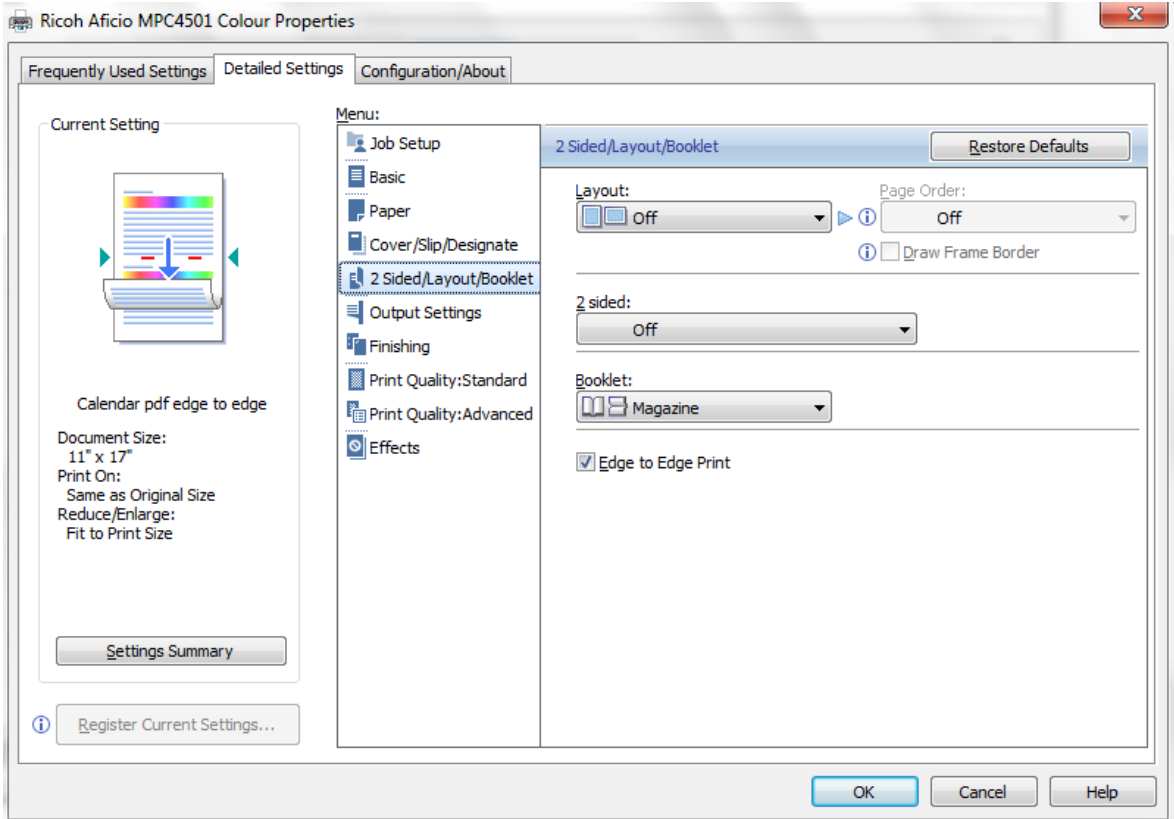


Printer settings for printing God's Calendar from a pdf:

1. Press Control-P to open the printer pop-up menu.
2. Select the printer that can print in colour.
3. Click Properties.
4. Under the Basic Tab, select 11"x17" size, Landscape orientation, booklet Magazine, staple 2 in center, and colour, as per the screen shot below.



5. Find the Tab that has the check box for Edge to Edge Print, and check the box, as per the screen shot below.



6. Optional, to save these settings for printing calendars in the future:

Click "Register Current Settings", enter a name (e.g., "Calendar"), and click OK in the current Register window.

7. Click OK in the current Printer Properties window.

8. Select the number of copies, and then click Print in the current Print window!